



Location Intelligence
Infrastructure Asset Management

Confirm[®]

Financial Interface Specification
v22.20a.AM

Information in this document is subject to change without notice and does not represent a commitment on the part of the vendor or its representatives. No part of this document may be reproduced or transmitted in any form or by any means, electronic or mechanical, including photocopying, without the written permission of Confirm.

© 2022 Confirm. All rights reserved.

Products named herein may be trademarks of their respective manufacturers and are hereby recognized. Trademarked names are used editorially, to the benefit of the trademark owner, with no intent to infringe on the trademark.

Open Source Attribution Notice

The Confirm suite of products contain the following open source software:

- Feature Data Objects v 3.5.0, which is licensed under GNU Lesser General Public License, Version 2.1, February 1999 with the unRAR restriction. The license can be downloaded from: <http://fdo.osgeo.org/licenceAndGovernance.html>. The source code for this software is available from <http://fdo.osgeo.org/content/fdo-350-downloads>
- MrSID software (specifically the mrsid32.dll) is used under license and is Copyright © 1995-2002, LizardTech, Inc., 1008 Western Ave., Suite 200, Seattle, WA 98104. All rights reserved. MrSID is protected by U.S. Patent No. 5,710,835. Foreign patents are pending. Unauthorized use or duplication prohibited.

Patented technology in the Software was developed in part through a project at the Los Alamos National Laboratory, funded by the U.S. Government and managed by the University of California. The U.S. Government has reserved rights in the technology, including a non-exclusive, nontransferable, irrevocable, paid-up license to practice or have practiced throughout the world, for or on behalf of the United States, inventions covered by the patent, and has other rights under 35 U.S.C. § 200-212 and applicable implementing regulations.

For further information, contact Lizardtech.

- NodaTime, version number 1.3.10, which is licensed under the Apache license, version number 2.0. The license can be downloaded from <http://www.apache.org/licenses/LICENSE-2.0>. The source code for this software is available from <http://nodatime.org/>.
- Chromium Embedded Framework, version 3, which is licensed under the New BSD License. The license can be downloaded from <http://opensource.org/licenses/BSD-3-Clause>. The source code for this software is available from <http://code.google.com/p/chromiumembedded/downloads/list>.
- Xilium.CefGlue, version 3, which is licensed under the MIT License (with portions licensed under the New BSD License). The licenses can be downloaded from <http://opensource.org/licenses/MIT> and <http://opensource.org/licenses/BSD-3-Clause>. The source code for this software is available from <http://xilium.bitbucket.org/cefglue/>.
- D3 Data Driven Documentation, version 3.4.1, which is licensed under the New BSD License. The license can be downloaded from <https://github.com/mbostock/d3/blob/master/LICENSE>. The source code for this software is available from <http://d3js.org/>.
- OpenLayers, version 2.12, which is licensed under the Modified BSD License. The license can be downloaded from <http://svn.openlayers.org/trunk/openlayers/license.txt>. The source code for this software is available from <http://trac.osgeo.org/openlayers/browser>.
- OpenLayers, version 3, which is licensed under the BSD 2-Clause License. The license which can be downloaded from <https://github.com/openlayers/ol3/blob/master/LICENSE.md>. The source code for this software is available from <https://github.com/openlayers/ol3>.
- Proj4js, version 1+, which is licensed under the Apache License, Version 2, January 2004. The license can be downloaded from <http://www.apache.org/licenses/LICENSE-2.0.html>. The source code for this software is available from <http://trac.osgeo.org/proj4js/>.
- requireJS, version 2.1.2, which is licensed under the MIT License or the New BSD License. The license can be downloaded from <https://github.com/jrburke/requirejs/blob/master/LICENSE>. The source code for this software is available from <http://requirejs.org/>.

- Apache Cordova, version 8.1.2, which is licensed under the Apache License, Version 2, January 2004. The license can be downloaded from <http://www.apache.org/licenses/LICENSE-2.0.html>. The source code for this software is available from <http://phonegap.com/download/>.
- Xilium.CefGlue, version 75.1, which is unlicensed. The source code for this software is available from <https://gitlab.com/xiliumhq/chromiumembedded/cefglue>.
- Chromium Embedded Framework, version 75.0, which is licensed according to the following criteria:

Copyright (c) 2008-2014 Marshall A. Greenblatt. Portions Copyright (c) 2006-2009 Google Inc. All rights reserved.

Redistribution and use in source and binary forms, with or without modification, are permitted provided that the following conditions are met:

- * Redistributions of source code must retain the above copyright notice, this list of conditions and the following disclaimer.
- * Redistributions in binary form must reproduce the above copyright notice, this list of conditions and the following disclaimer in the documentation and/or other materials provided with the distribution.
- * Neither the name of Google Inc. nor the name Chromium Embedded Framework nor the names of its contributors may be used to endorse or promote products derived from this software without specific prior written permission.

THIS SOFTWARE IS PROVIDED BY THE COPYRIGHT HOLDERS AND CONTRIBUTORS "AS IS" AND ANY EXPRESS OR IMPLIED WARRANTIES, INCLUDING, BUT NOT LIMITED TO, THE IMPLIED WARRANTIES OF MERCHANTABILITY AND FITNESS FOR A PARTICULAR PURPOSE ARE DISCLAIMED. IN NO EVENT SHALL THE COPYRIGHT OWNER OR CONTRIBUTORS BE LIABLE FOR ANY DIRECT, INDIRECT, INCIDENTAL, SPECIAL, EXEMPLARY, OR CONSEQUENTIAL DAMAGES (INCLUDING, BUT NOT LIMITED TO, PROCUREMENT OF SUBSTITUTE GOODS OR SERVICES; LOSS OF USE, DATA, OR PROFITS; OR BUSINESS INTERRUPTION) HOWEVER CAUSED AND ON ANY THEORY OF LIABILITY, WHETHER IN CONTRACT, STRICT LIABILITY, OR TORT (INCLUDING NEGLIGENCE OR OTHERWISE) ARISING IN ANY WAY OUT OF THE USE OF THIS SOFTWARE, EVEN IF ADVISED OF THE POSSIBILITY OF SUCH DAMAGE.

The source code for this software is available from <http://opensource.spotify.com/cefbuilds/index.html#>

July 27, 2022

Table of Contents

Specifications

Financial Interface File Transfer (LJM-8-129)	6
Program Operation	6
Transfer File and Record Definitions	9
Reports Produced	13

Specifications

The following sections outline all the Specifications that exist within the Confirm functionality.

In this section

Financial Interface File Transfer (LJM-8-129)	6
---	---

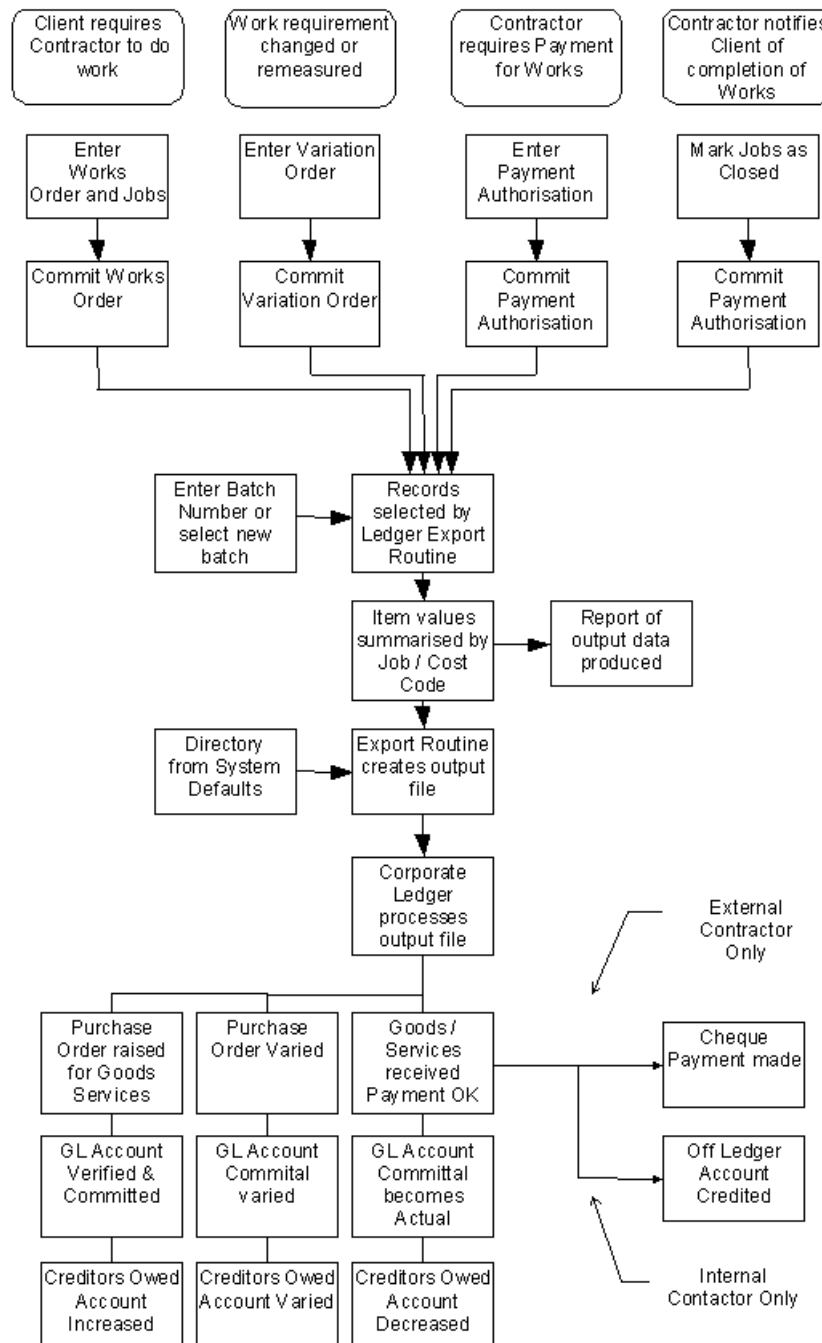
Financial Interface File Transfer (LJM-8-129)

Introduction

This document details the operational requirement for a link between Confirm and an unspecified corporate ledger system.

Program Operation

FINANCIAL INTERFACE IN CONTEXT



PROGRAM OVERVIEW

The proposed program will interpret data about jobs entered into Confirm and will produce a file (called the Transfer file) in a format readable by a corporate ledger system. The Transfer file will contain details of all newly committed Jobs and all Jobs which have been completed or cancelled. In addition the transfer file will contain records showing when Variation Orders have been used to vary the commitment against a Job and when partial completion of a Job has taken place. In this way a complete picture of the value of committed work in Confirm will be presented.

The proposed program is intended for use weekly and upon each use will produce printed reports of the detail of what has been output to the Transfer file, and also a summary of the number of records processed.

The option to preview the result, which can be used for certain batch routines in Confirm, will not be available in the Transfer program.

Confirm TABLE USAGE

The program will take its input data from the Confirm Job table and other tables. Selection of which Jobs should be written to the Transfer file will be according to the actual status of the Job. This field is updated by the system and indicates whether a Job has been committed using the commit routine in Confirm and then if it has been completed using the Payment routine in Confirm.

A record will be included in the Transfer file at each stage of the process for each Cost Code used on each Job. Thus a Transfer file may include more than one record for a Job at any stage of the process.

The Confirm Street Section table will be used to read the Street name and Section number for each job output to the Transfer file according to the data format definition.

Creditor Code

If a Creditor code has been entered against a Contract then this will be output in the Transfer file as appropriate for each record. If the Creditor code has not been specified then the Contract code itself will be output, padded up to 15 characters in the same manner as described above.

USER INTERACTION

Access to the Program from the Confirm Menu System

The Transfer program will be accessed from within the normal Confirm menu system. Use of the program will be controlled by the Confirm security system when accessed in this way.

System Back-Up

The Transfer program will ask the user if a system back-up has been performed. Only if the user responds positively will execution of the Transfer program continue. The back-up will not be possible from within Confirm.

If it is required to recreate the Transfer file at a future date this will be possible from data stored against the selected Jobs which will be updated by the Transfer program each time it is run. This data will include the week number and the calendar year so that any Transfer file may be regenerated.

Information Required from the User

The user will be required to store the following data in the system for use when the Transfer file is created.

- The calendar year
- Week number when Transfer processed
- Sub-directory in which Transfer file should be saved
- If the Transfer file should also be written to a floppy disc drive

The week number must be a positive integer in the range 1 to 54.

FILE NAMES, DIRECTORIES AND INTEGRITY

Transfer files generated by the program will be saved with the name LEDGER##.TXT, where ## represents the week number entered by the user. The Transfer program will prevent the same week number being used twice (in the same year) and a previous Transfer file being accidentally overwritten. To do this the Transfer program will check before the Transfer file is generated that a file for that week number does not exist in the specified directory. For successive years when the week number recurs the Transfer file must either be saved to a different directory or the file from the previous year must be deleted.

The program will allow the user to make one or two copies of the Transfer file. Firstly the Transfer program will make a main copy of the file in a specified directory, then it will duplicate the file to a second specified directory. The path for the main copy must be present and valid. If specified the path to the second copy must be valid. If either path is invalid then the program will not proceed.

Transfer File and Record Definitions

The Transfer file will contain four types of job records. Each of these types will have associated with it a batch header containing summary details of all the records of that type, also written to the Transfer file. The format of each record is explained below

OVERALL STRUCTURE AND FORMAT

Each record or header output will occupy one line in the Transfer file and will be terminated by the line termination characters appropriate to the operating system. No other delimiting characters will be used. The first characters in each record will identify the record or header type.

Each field in a record will be of the length specified in the record definition tables. If a field is of insufficient length it will be padded with leading zeros in the case of a numeric field or with trailing spaces in the case of an ASCII field.

If an ASCII field is too long it will simply be truncated on the right, however any Confirm code fields output in the transfer file will be output in full (for instance the Job reference)

Value fields will be written to the Transfer file in pence with no decimal separator. Value fields in the records and the batch headers will be preceded by either a "+" or a "-" character to indicate their sign, followed by twelve digits. For instance a value of 26.75 would be shown as +000000002675.

In the event that there are no records of a particular type to output, a batch header with zero control totals will be included in the transfer file.

NEW JOB RECORDS

This section defines the format of the header and record for newly committed jobs.

Definition of the batch header for new job records:

Field	Type	Size	Contents	Description
1	Numeric, fixed	2	10	Header identifier
2	Fixed	2	01	Record type identifier
3	Numeric	2	nn	Week number for transfer
4	Numeric	13	+ - nnnnnnnnnnnn	Total value of records of this type
5	Numeric	6	nnnnnn	Total number of records of this type

Total length of header	25
------------------------	----

Definition of new job type records:

Field	Type	Size	Contents	Description
1	Numeric, fixed	2	20	Record identifier
2	Numeric, fixed	2	01	Record type identifier
3	Numeric	8	nnnnnnnn	Job number
4	ASCII	40		Site name for Job
5	Numeric	10	nnnnnnnnnn	Plot number for Job (multiplied by 100)
6	ASCII	4		Action Officer code
7	Numeric	8	DDMMYYYY	Date that Job committed.
8	ASCII	15		Creditor code for Contract
9	Numeric	8	nnnnnnnn	Works Order number for Job
10	ASCII	15		Cost Code for this record
11	Numeric	13	+nnnnnnnnnnnn	Cost Code value of Job
12	ASCII	6		Contract code
13	ASCII	50		Contract name
14	ASCII	4		Contractor code
15	ASCII	50		Contractor name
16	ASCII	50		Job Description

Total length of record	285
------------------------	-----

JOB VARIATION RECORDS

This section defines the format of the header and record for Job Variations. These records will be output each time there is a Variation Order committed against a Job

Definition of the batch header for Job Variation records:

Field	Type	Size	Contents	Description
1	Numeric, fixed	2	10	Header identifier
2	Fixed	2	02	Record type identifier
3	Numeric	2	nn	Week number for Transfer
4	Numeric	13	+nnnnnnnnnnnn	Total value of records of this type
5	Numeric	6	nnnnnn	Total number of records of this type

Total length of header	25
------------------------	----

Definition of Job Variation records:

Field	Type	Size	Contents	Description
1	Numeric, fixed	2	20	Record identifier
2	Numeric, fixed	2	02	Record type identifier

Field	Type	Size	Contents	Description
3	Numeric	8	nnnnnnnn	Job number
4	ASCII	40		Site name for Job
5	Numeric	10	nnnnnnnnnn	Plot number for Job(multiplied by 100)
6	ASCII	4		Action Officer code(who raised Variation)
7	Numeric	8	DDMMYYYY	Date of Variation Order
8	ASCII	15		Creditor code for Contract or Contract code
9	Numeric	8	nnnnnnnn	Works Order number for Job
10	ASCII	15		Cost Code for this record
11	Numeric	13	+nnnnnnnnnnnn	Value of Variation against Cost Code / Job
12	ASCII	6		Contract code
13	ASCII	50		Contract name
14	ASCII	4		Contractor code
15	ASCII	50		Contractor name
16	ASCII	50		Job Description

Total length of record	285
------------------------	-----

COMPLETED VALUE RECORDS

This section defines the format of the header and record for indicating the completed value of Jobs. These records will be output each time part of the value of a Job is completed.

Definition of the batch header for Completed Value records:

Field	Type	Size	Contents	Description
1	Numeric, fixed	2	10	Header identifier
2	Fixed	2	03	New job identifier
3	Numeric	2	nn	Week number for Transfer
4	Numeric	13	+nnnnnnnnnnnn	Total value of records of this type
5	Numeric	6	nnnnnn	Total number of records of this type

Total length of header	25
------------------------	----

Definition of Completed Value type records:

Field	Type	Size	Contents	Description
1	Numeric, fixed	2	20	Record identifier
2	Numeric, fixed	2	03	Record type identifier
3	Numeric	8	nnnnnnnn	Job number
4	ASCII	40		Site name for Job
5	Numeric	10	nnnnnnnnnn	Plot number for Job(multiplied by 100)
6	ASCII	4		Action Officer code(who posted payments)
7	Numeric	8	DDMMYYYY	Date from appropriate Payment Batch

Field	Type	Size	Contents	Description
8	ASCII	15		Creditor code for Contract or Contract code
9	Numeric	8	nnnnnnnn	Works Order number for Job
10	ASCII	15		Cost Code for this record
11	Numeric	13	+nnnnnnnnnnnn	Value of payment against Cost Code / Job
12	ASCII	6		Contract code
13	ASCII	50		Contract name
14	ASCII	4		Contractor code
15	ASCII	50		Contractor name
16	ASCII	20		Contractor Payment Request reference (where applicable)
17	ASCII	50		Job Description

Total length of record	305
------------------------	-----

JOB CLOSED RECORDS

This section defines the format of the header and record for Job Closures. These records will be output when a Job has had all its value either completed or cancelled and is no longer available in the live part of the system.

Definition of the batch header for fully Job Closed records:

Field	Type	Size	Contents	Description
1	Numeric, fixed	2	10	Header identifier
2	Fixed	2	04	Record type identifier
3	Numeric	2	nn	Week number of Transfer
4	Numeric	13	+000000000000	Zero value for compatibility with other record types
5	Numeric	6	nnnnnn	Total number of records of this type

Total length of header	25
------------------------	----

Definition of Job Closed type records:

Field	Type	Size	Contents	Description
1	Numeric, fixed	2	20	Record identifier
2	Numeric, fixed	2	04	Record type identifier
3	Numeric	8	nnnnnnnn	Job number
4	ASCII	40		Site name for Job
5	Numeric	10	nnnnnnnnnn	Plot number for Job(multiplied by 100)
6	ASCII	4		Action Officer code who posted payments
7	Numeric	8	DDMMYYYY	"Date Completed" from Job Status log
8	ASCII	15		Creditor code for Contract or Contract code
9	Numeric	8	nnnnnnnn	Works Order number for Job

Field	Type	Size	Contents	Description
10	ASCII	15		Cost Code for this record
11	Numeric	13	+000000000000	Zero value for compatibility with other record types
12	ASCII	6		Contract code
13	ASCII	50		Contract name
14	ASCII	4		Contractor code
15	ASCII	50		Contractor name
16	ASCII	50		Job Description
Total length of record				235

Reports Produced

The Transfer program will produce two reports every time that it is run. These will automatically be sent to the printer but may also be viewed. The reports will show both the detail and a summary of the jobs written to the transfer file. It will also be possible to view the reports at any future date from the data stored in Confirm.

SUMMARY REPORT

The summary report will show the following data:

- Total number of records of each of the four types.
- The total value of new Jobs and the total value of completed Jobs.
- The name of the transfer file.
- The date the report was produced and the week number entered by the user.

DETAIL REPORT

Jobs in the detail report will be grouped according to their status. The report will show the following data for each job written to the Transfer file:

- Job number.
- Cost Code used, a Job will have multiple lines on the report if multiple Cost Codes were used
- Site name.
- The Contract code and Works Order number.
- Total value, zero for cancelled jobs with plus or minus sign as appropriate

The detail report will also show batch summary information as listed in the summary report section above. A Job may be shown in several sections of the report if appropriate depending on the elapsed time since the last running of the Transfer.