



Location Intelligence
Infrastructure Asset Management

Confirm[®]

Confirm Mapping Link to MapInfo Professional
v21.00b.AM

Information in this document is subject to change without notice and does not represent a commitment on the part of the vendor or its representatives. No part of this document may be reproduced or transmitted in any form or by any means, electronic or mechanical, including photocopying, without the written permission of Confirm.

© 2020 Confirm. All rights reserved.

Products named herein may be trademarks of their respective manufacturers and are hereby recognized. Trademarked names are used editorially, to the benefit of the trademark owner, with no intent to infringe on the trademark.

Open Source Attribution Notice

The Confirm suite of products contain the following open source software:

- Feature Data Objects v 3.5.0, which is licensed under GNU Lesser General Public License, Version 2.1, February 1999 with the unRAR restriction. The license can be downloaded from: <http://fdo.osgeo.org/licenceAndGovernance.html>. The source code for this software is available from <http://fdo.osgeo.org/content/fdo-350-downloads>
- MrSID software (specifically the mrsid32.dll) is used under license and is Copyright © 1995-2002, LizardTech, Inc., 1008 Western Ave., Suite 200, Seattle, WA 98104. All rights reserved. MrSID is protected by U.S. Patent No. 5,710,835. Foreign patents are pending. Unauthorized use or duplication prohibited.

Patented technology in the Software was developed in part through a project at the Los Alamos National Laboratory, funded by the U.S. Government and managed by the University of California. The U.S. Government has reserved rights in the technology, including a non-exclusive, nontransferable, irrevocable, paid-up license to practice or have practiced throughout the world, for or on behalf of the United States, inventions covered by the patent, and has other rights under 35 U.S.C. § 200-212 and applicable implementing regulations.

For further information, contact Lizardtech.

- NodaTime, version number 1.3.10, which is licensed under the Apache license, version number 2.0. The license can be downloaded from <http://www.apache.org/licenses/LICENSE-2.0>. The source code for this software is available from <http://nodatime.org/>.
- Chromium Embedded Framework, version 3, which is licensed under the New BSD License. The license can be downloaded from <http://opensource.org/licenses/BSD-3-Clause>. The source code for this software is available from <http://code.google.com/p/chromiumembedded/downloads/list>.
- Xilium.CefGlue, version 3, which is licensed under the MIT License (with portions licensed under the New BSD License). The licenses can be downloaded from <http://opensource.org/licenses/MIT> and <http://opensource.org/licenses/BSD-3-Clause>. The source code for this software is available from <http://xilium.bitbucket.org/cefglue/>.
- D3 Data Driven Documentation, version 3.4.1, which is licensed under the New BSD License. The license can be downloaded from <https://github.com/mbostock/d3/blob/master/LICENSE>. The source code for this software is available from <http://d3js.org/>.
- OpenLayers, version 2.12, which is licensed under the Modified BSD License. The license can be downloaded from <http://svn.openlayers.org/trunk/openlayers/license.txt>. The source code for this software is available from <http://trac.osgeo.org/openlayers/browser>.
- OpenLayers, version 3, which is licensed under the BSD 2-Clause Licence. The license which can be downloaded from <https://github.com/openlayers/ol3/blob/master/LICENSE.md>. The source code for this software is available from <https://github.com/openlayers/ol3>.
- Proj4js, version 1+, which is licensed under the Apache License, Version 2, January 2004. The license can be downloaded from <http://www.apache.org/licenses/LICENSE-2.0.html>. The source code for this software is available from <http://trac.osgeo.org/proj4js/>.
- requireJS, version 2.1.2, which is licensed under the MIT License or the New BSD License. The license can be downloaded from <https://github.com/jrburke/requirejs/blob/master/LICENSE>. The source code for this software is available from <http://requirejs.org/>.

- Apache Cordova, version 8.1.2, which is licensed under the Apache License, Version 2, January 2004. The license can be downloaded from <http://www.apache.org/licenses/LICENSE-2.0.html>. The source code for this software is available from <http://phonegap.com/download/>.
- Xilium.CefGlue, version 75.1, which is unlicensed. The source code for this software is available from <https://gitlab.com/xiliumhq/chromiumembedded/cefglue>.
- Chromium Embedded Framework, version 75.0, which is licensed according to the following criteria:

Copyright (c) 2008-2014 Marshall A. Greenblatt. Portions Copyright (c) 2006-2009 Google Inc. All rights reserved.

Redistribution and use in source and binary forms, with or without modification, are permitted provided that the following conditions are met:

- * Redistributions of source code must retain the above copyright notice, this list of conditions and the following disclaimer.
- * Redistributions in binary form must reproduce the above copyright notice, this list of conditions and the following disclaimer in the documentation and/or other materials provided with the distribution.
- * Neither the name of Google Inc. nor the name Chromium Embedded Framework nor the names of its contributors may be used to endorse or promote products derived from this software without specific prior written permission.

THIS SOFTWARE IS PROVIDED BY THE COPYRIGHT HOLDERS AND CONTRIBUTORS "AS IS" AND ANY EXPRESS OR IMPLIED WARRANTIES, INCLUDING, BUT NOT LIMITED TO, THE IMPLIED WARRANTIES OF MERCHANTABILITY AND FITNESS FOR A PARTICULAR PURPOSE ARE DISCLAIMED. IN NO EVENT SHALL THE COPYRIGHT OWNER OR CONTRIBUTORS BE LIABLE FOR ANY DIRECT, INDIRECT, INCIDENTAL, SPECIAL, EXEMPLARY, OR CONSEQUENTIAL DAMAGES (INCLUDING, BUT NOT LIMITED TO, PROCUREMENT OF SUBSTITUTE GOODS OR SERVICES; LOSS OF USE, DATA, OR PROFITS; OR BUSINESS INTERRUPTION) HOWEVER CAUSED AND ON ANY THEORY OF LIABILITY, WHETHER IN CONTRACT, STRICT LIABILITY, OR TORT (INCLUDING NEGLIGENCE OR OTHERWISE) ARISING IN ANY WAY OUT OF THE USE OF THIS SOFTWARE, EVEN IF ADVISED OF THE POSSIBILITY OF SUCH DAMAGE.

The source code for this software is available from <http://opensource.spotify.com/cefbuilds/index.html#>

November 27, 2020

Contents

MapInfo Professional Mapping Link

Confirm Tools in MapInfo Professional	6
Loading the Tools	6
Map Layers	7
Viewing Layers	7
Assigning Feature Groups to Layers	8
Confirm Tools	9
Confirm Tools Menu	14
 Mapping Tools in Confirm	 15
Map button	15
Select Features for Map	15

MapInfo Professional Mapping Link

The Confirm Mapping Link to MapInfo Professional provides a link between MapInfo Professional and Confirm to facilitate the displaying and maintenance of Asset and Site data between the two systems.

Below is an overview of the Confirm Mapping Link functionality:

- Allows the displaying of a selected Asset in Confirm within MapInfo and vice versa.
- Provides the necessary functionality to maintain the links between the Assets in Confirm and MapInfo Professional.

This manual deals with the tools present in Confirm, and in MapInfo Professional, for viewing data, linking map shapes and points to Confirm features, and mapping Features from Confirm to MapInfo Professional. All the functionality covered in this manual assumes that the Confirm Mapping Link is installed, and that both Confirm and MapInfo Professional are running. The workspace opened in MapInfo Professional should be one that contains layers (or is intended to contain layers) related to Confirm Feature Groups, and contains the SBS Table Layer.

For more information regarding the installation of the link please refer to the following document which is supplied with the Confirm Client installation files:

Installing Confirm Mapping Link for MapInfo (MRD-39-301).pdf

For information on MapInfo Professional functionality, please consult the MapInfo Professional manuals.

Note: To use this mapping link it will need to be set as the current mapping engine. This is automatically done when the link is installed.

In this section

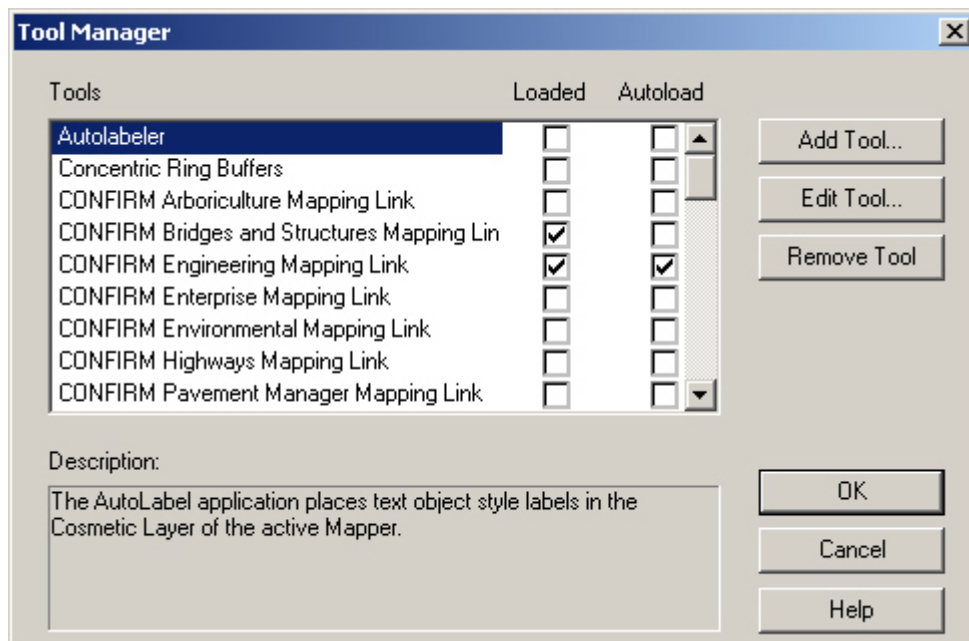
Confirm Tools in MapInfo Professional	6
Mapping Tools in Confirm	15

Confirm Tools in MapInfo Professional

The Confirm / MapInfo Professional link provides a set of tools in MapInfo Professional which are used to carry out Confirm related tasks.

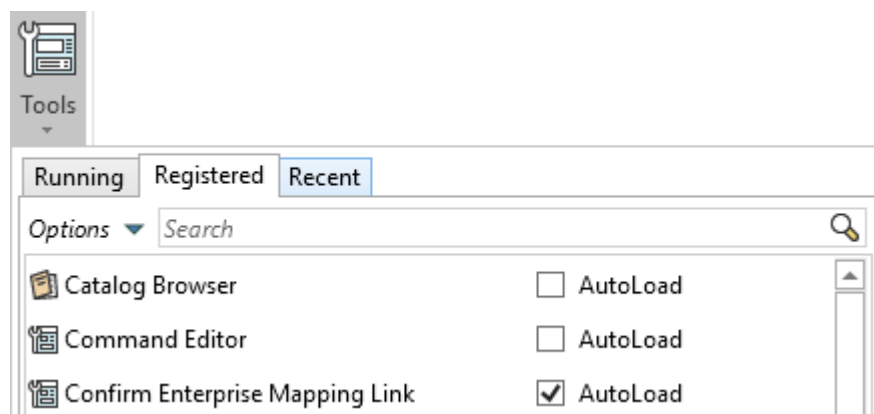
Loading the Tools

If the Confirm tools are not displayed on opening MapInfo Professional, select Tool Manager from the Tools menu to display the Tool Manager:



Check the 'Loaded' column against the Confirm program you are using, to display the tools in the current session, and check the Autoload column to automatically display the tools in future sessions.

For 64 bit versions of MapInfo, the tools can be automatically loaded from Home > Tools > Registered tab.



Map Layers

To enable the functionality of the Confirm Mapping Link Tools, each layer containing spatial features representing Assets within Confirm, must be registered to the corresponding Confirm Feature Groups.

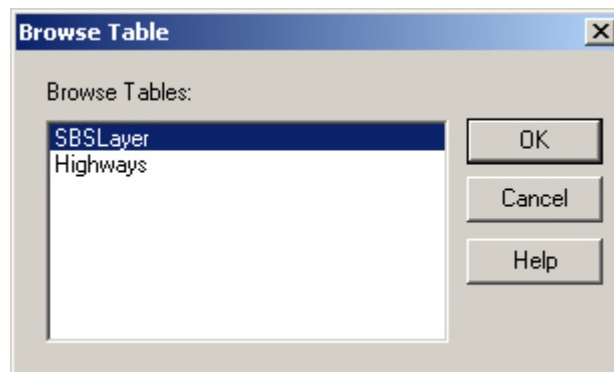
Layers can be registered to Confirm feature groups based on the following:

A layer can contain spatial features that represent Confirm Assets belonging to multiple Confirm Feature Groups. In this case, the Confirm Feature Group for each of the layer's spatial features must be registered to that layer.

Assets that belong to a Confirm Feature Group can have spatial representations in multiple layers. In this case, each layer containing the spatial representations for a Confirm Feature Group must be registered to that Confirm Feature Group.

Viewing Layers

To view a list of all layers that are currently registered to a Confirm Feature Group, select the New Browser Window option from the Windows menu. The Browse Tables dialog will be displayed:



Select the required table to view.

SBS Layer table

The SBSLayer displays the layers that have been linked to Feature Groups:

	Feature_Group_C	Site_Code	Layer
<input type="checkbox"/>	WS		Highways
<input type="checkbox"/>	HWGL		Gullies

Other Layers

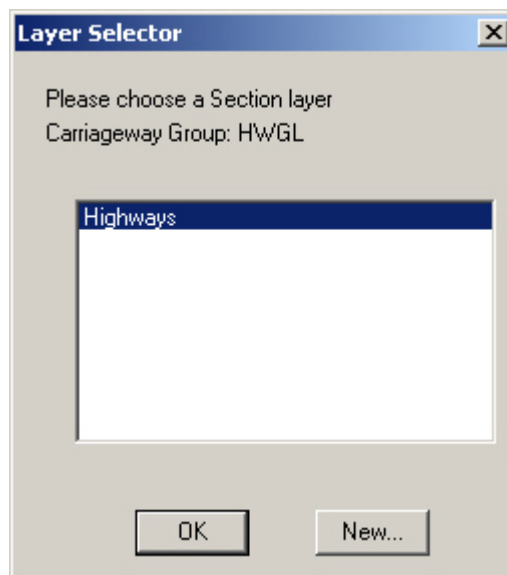
Select another layer in the Browse Tables dialog to display all the Confirm Feature assigned to the selected layer:

Highways Browser			
Street_Name	Feature_Numb	Feature_ID	Feature_Location
<input type="checkbox"/> ABBEY CLOSE	1.00		
<input type="checkbox"/> ABBEY LANE	1.00		From jnc. Warminster Road to jnc. Rosemary Lane
<input type="checkbox"/> ABBEY PARK	1.00		
<input type="checkbox"/> ABBEY VIEW	1.00		
<input type="checkbox"/> ABBEY VIEW	1.00		From jnc. The Tynning to jnc. Pulteney Gardens
<input type="checkbox"/> ABBEY VIEW GARDENS	1.00		From end to jnc. Abbey View
<input type="checkbox"/> ABBEYGATE STREET	1.00		From jnc. Stall Street to jnc. Abbey Green
<input type="checkbox"/> ABBOTTS FARM CLOSE	1.00		From end to jnc. Farrington Road
<input type="checkbox"/> ABINGDON GARDENS	1.00		Estate off Banwell Road
<input type="checkbox"/> ACACIA COURT	1.00		

You may also view Feature in the layer using Feature Layer Browser.

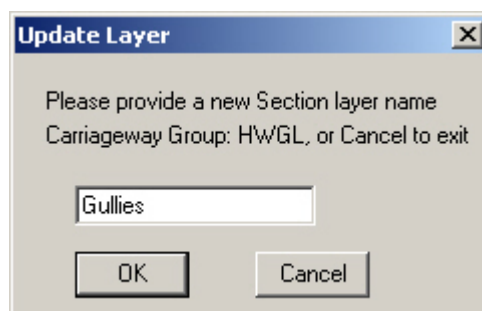
Assigning Feature Groups to Layers

When exporting Feature from Confirm to MapInfo Professional, the system will identify any Features in a Feature Group that is not assigned to a layer in MapInfo Professional, and display the Layer Selector:



You may assign the new Feature Group to an existing Layer by selecting the layer in the list.

You may create a new layer by clicking on the 'New' button. This will display the 'Update Layer' dialog



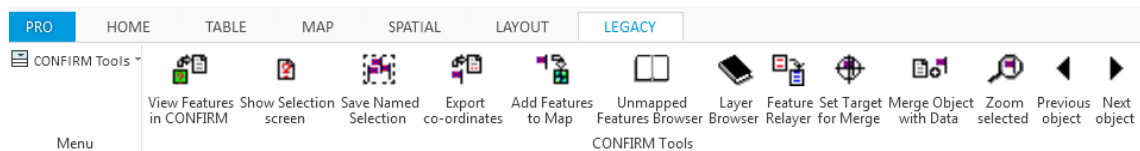
Enter a name for the new Layer and click OK. The new layer is created and assigned to the Feature Group.

Confirm Tools

The Confirm Tools are displayed on their own toolbar:



For 64 bit versions of MapInfo the tools will appear on the legacy ribbon, as follows:



Tools are also available from the Confirm Tools menu on the Menu Bar / ribbon.

Each tool is described below

View Features in Confirm



View Features in Confirm will switch from MapInfo Professional to Confirm and will launch the Feature form, displaying all the Features that are currently selected in MapInfo Professional.

Show Selection Screen



Show Selection Screen will switch to Confirm and display the 'Select Features for Map' screen.

Save Named Selection



Selections of spatial features in MapInfo Professional can be saved to a Named Selection in Confirm. This allows you to select Assets within Confirm based on the selection you make graphically.

To save a spatial selection as a Named Selection:

1. Select the Assets that you wish to save as a Named selection.
2. Click on the Save as Named Selection button or select Named Selection from the Confirm Mapping Link Tools menu.

3. The Save Named Selection form will appear. Populate the fields on this form and click on the OK button.

The Named Selection is now available for Asset selection purposes in Confirm.

For more information on Named Selections, refer to the Confirm user manual.

Export Feature Coordinates



Export Feature Coordinates will update the mapping coordinates for the Features currently selected in MapInfo Professional and export them to Confirm. This will update the Geography tab of the selected Feature(s) with the new coordinates taken from the mapped Features.

Add Features to Map

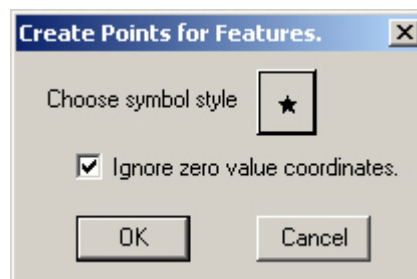


Add Feature to Map will create a point Feature in MapInfo Professional from all unmapped Feature with coordinates. Unmapped Features are all those which have been exported from Confirm, but for which no link has been established between the Feature and a point, line or shape in MapInfo Professional. These Features will be listed in the Unmapped Features Browser.

To create point Features:

Click on the Add Features to Map tool or select Add Features to Map from the Confirm Tools menu.

The Create Points for Features dialog will be displayed:



Click on the 'Choose symbol style' button to change the symbol, size and colour.

Click on OK to create a point for each unmapped Feature with coordinates.

Unmapped Feature Browser



The unmapped Feature Browser will display all the Features that have been exported from Confirm, but for which no link has been established between the Feature and a point, line or shape in MapInfo Professional.

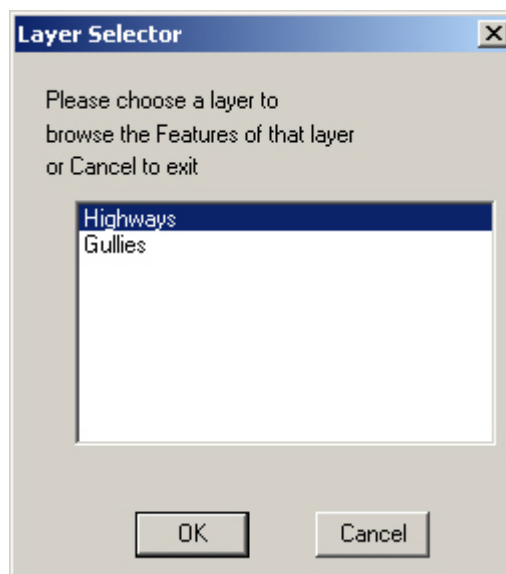
Street_Name	Feature_Number	Feature_Type_Name	Primary_Measurement	Layer
FOOTPATHS ASSOCIATED ROUNDHILL GROVE	0.00		0.00	
FOOTPATH BENEATH 17 ARGYLE STREET	1.00	Whole Street	21.04	Highways
PRINCES BUILDINGS	1.00	Whole Street	0.00	Highways
SPRING GARDENS ROAD (WEIR SECTION)	1.00	Whole Street	0.00	Highways

Each Feature (row in the table) may be selected or deselected by clicking the far left column. Currently selected rows are shown with a black square in the columns, deselected rows have a white square in the column.

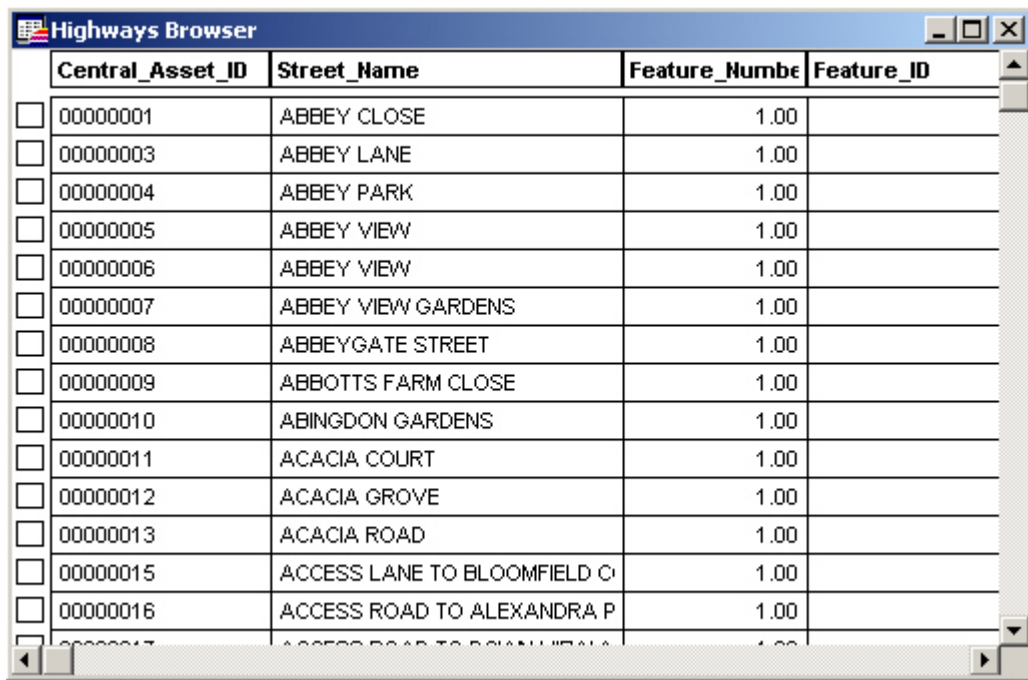
Feature Layer Browser



The Feature Layer Browser will display all the mapped Features in the selected layer. Click on the Feature Layer browser button, or select Feature Layer Browser from the Confirm Tool menu, to display the Layer Selector:



Click on the required layer, and on 'OK' to display the Layer Browser:



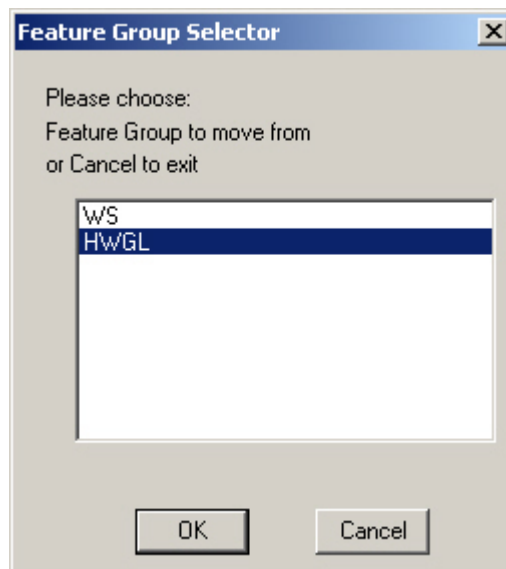
	Central_Asset_ID	Street_Name	Feature_Numbe	Feature_ID
<input type="checkbox"/>	00000001	ABBAY CLOSE	1.00	
<input type="checkbox"/>	00000003	ABBAY LANE	1.00	
<input type="checkbox"/>	00000004	ABBAY PARK	1.00	
<input type="checkbox"/>	00000005	ABBAY VIEW	1.00	
<input type="checkbox"/>	00000006	ABBAY VIEW	1.00	
<input type="checkbox"/>	00000007	ABBAY VIEW GARDENS	1.00	
<input type="checkbox"/>	00000008	ABBAYGATE STREET	1.00	
<input type="checkbox"/>	00000009	ABBOTTS FARM CLOSE	1.00	
<input type="checkbox"/>	00000010	ABINGDON GARDENS	1.00	
<input type="checkbox"/>	00000011	ACACIA COURT	1.00	
<input type="checkbox"/>	00000012	ACACIA GROVE	1.00	
<input type="checkbox"/>	00000013	ACACIA ROAD	1.00	
<input type="checkbox"/>	00000015	ACCESS LANE TO BLOOMFIELD C	1.00	
<input type="checkbox"/>	00000016	ACCESS ROAD TO ALEXANDRA P	1.00	
<input type="checkbox"/>	00000017	ACCESS ROAD TO BURNHAM	1.00	

Each Feature (row in the table) may be selected or deselected by clicking the far left column. Currently selected rows are shown with a black square in the columns, deselected rows have a white square in the column.

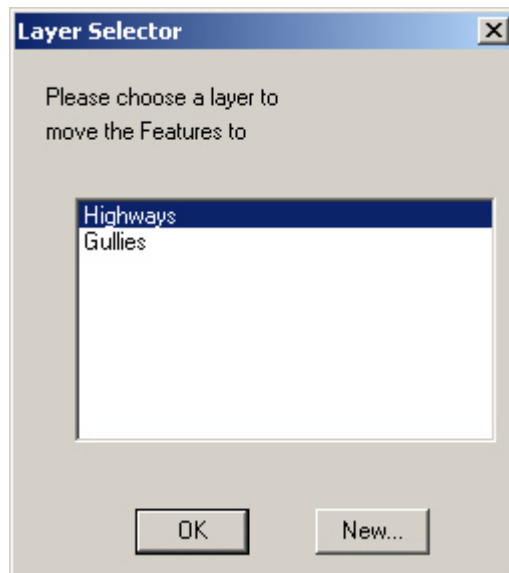
Feature Relayer



The Feature Relayer tool will move all objects in a feature group from one layer to another (or a new layer). Click on the Feature Relayer tool, or select Feature Relayer in the Confirm Tools menu to display the Feature Group Selector



Select the Feature Group to be moved from the list of available Feature Groups. (All Feature Groups relating to mapped Features will be displayed in the list). Click on 'OK' to display the Layer Selector:



Select the Layer to which the selected Feature Group is to be moved. Click on 'OK' to complete the move.

Set Target for Merge / Merge Object with Data



Set Target for Merge is used with 'Merge Object with Data' work in conjunction with each other and are used for linking existing digitisations to Confirm data. The digitisations may either be in a separate layer or in an existing Confirm layer but not linked.

To set the target:

1. Click on the object that is to be linked using the MapInfo Professional pointer tool
2. Click on the Set Target for Merge button or select Set Target for Merge from the Confirm Tools menu
3. A dialog is displayed, select from:

'Cut' - to make a copy of the object into the layer appropriate to the Feature with which it will be merged, leaving the original in its original layer. Appropriate to object that exist in a Confirm layer.

'Copy' - to remove the object from the layer where it currently exists and re-create it in the layer appropriate to the Feature with which it will be merged. Appropriate to objects that exist in another, non-Confirm, layer.

1. In the Unmapped Features browser, select the Confirm data that you wish to merge the digitisation with (it should have black square to left when selected)
2. Click on Merge Object with Data, or select Merge Object with Data from the Confirm Tool menu, to complete the merge.

Zoom Selected



Zoom Selected will adjust the zoom on the map window so that all currently selected objects may be seen in the window.

Previous Object / Next Object



The Previous Object and Next Object buttons will move through currently selected objects one at a time.

Confirm Tools Menu

In addition to the tools found on the toolbar, the Confirm Tools Menu contains the 'Check layers for repetitions' option.

Check layers for repetitions

Select the 'Check layers for repetitions' options to check all other registered layers to see if the central asset ids for the selected objects exist in any other layers. If duplicates are found you will be asked to select the object to keep; the other object(s) will be discarded.

Note: This utility will not check to see if the central asset ID has been duplicated in the layer that the features have been selected from (i.e. it doesn't check for duplicates within a table, just between tables).

Mapping Tools in Confirm

Confirm contains tools for switching from the selected Feature(s) in Confirm to view those features as spatial representations in a map. This functionality depends on a link having been established between the Confirm Feature(s) and the map object. Confirm contains tools to link Features with map objects and to maintain that link in line with changes made to the map object or the Feature.

Map button



The Map button will be found in several different windows. Its behaviour and function will change depending on where it is found.

When the Map button is used from a data form that displays Asset details such as the Feature form, only the current record in that form is selected and displayed on the Map.

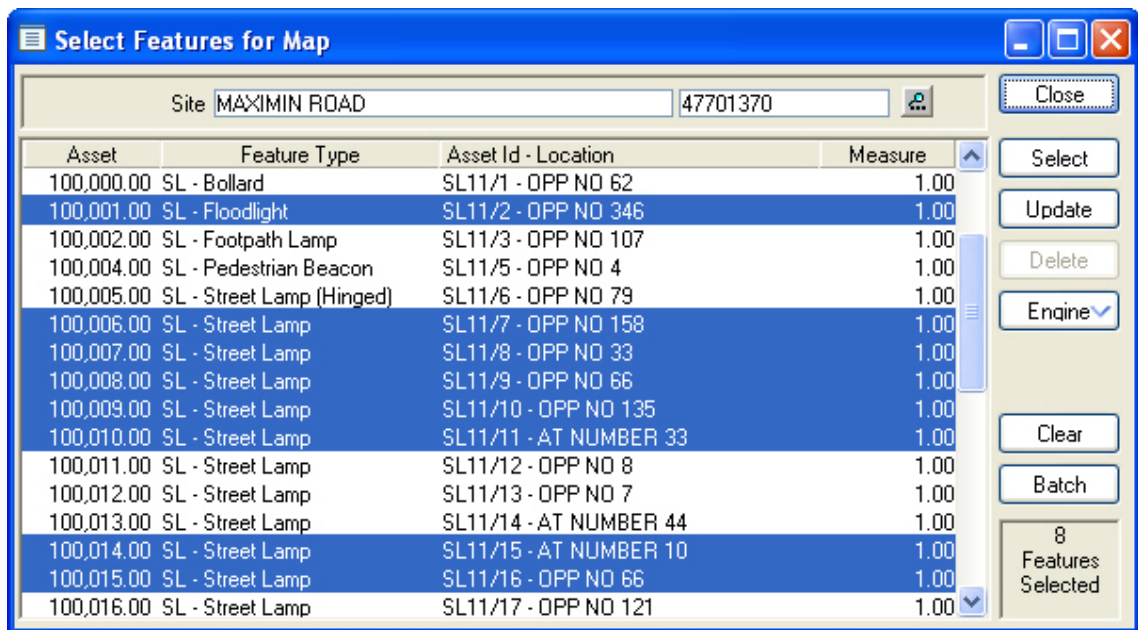
When the Map button is used from a lookup form, which has been launched from a form that displays Asset details such as the Feature Lookup form, all of the records displayed in that lookup form are selected and displayed on the Map.

When the Map button is used from a list form, which has been launched from a form that displays Asset details such as the Feature List, all of the records displayed in that list are selected and displayed on the Map.

When the Map button is used from a Site specific form such as the Sites or Customer Enquiry forms, only the spatial representation of the Whole Site Feature belonging to the current Site record in that form is selected and displayed on the Map.

Select Features for Map

This utility is used to select the Features that are to be displayed on a Map. It has a number of uses depending on the modules activated.



Site: Pick a Site to select Features from.

Selection Area: Select Feature from the list of Features in that Site by clicking to highlight the row. Clicking on second and subsequent rows adds those Features to the selection. Deselect Features by clicking on a highlighted row to remove the highlight. The number of Features currently selected is displayed in the bottom left hand corner of the screen and will be remembered if the Site is changed.

Select: Confirm will attempt to display the selected Features in the current mapping engine as defined by the **Engine:** option as shown below.

Update: After updating attributes of a Feature in Confirm, you may wish to update the attributes of that Feature's spatial representation.

(0400 Mapping Interface module)

If the Feature cannot be found, it will be displayed so that it can be linked to an existing digitisation or it can be digitised.

(0425 Map and 0440 Referential Integrity modules)

Clicking the Update button instructs the next run of the Referential Integrity Agent to update the Map. Therefore the update may not be immediate.

Engine: Select the mapping engine that should open the selected Features. The drop-down list will display the currently installed mapping engines. This option is only available when the current User has access to the 'Can Change Mapping Engine' User Security option.

Changing the current engine sets a User default in the Confirm database.

Clear: Clears all of the selected Features from all Sites.

Batch: Activates the Feature filter which will allow the selection of Features from more than one Site. If used, the Features returned will not be displayed in the selection area nor will the Site be displayed. The 'Features Selected' area of the screen will display the number of Features.